

- 1 Brookview Estates Open Space Preserve
- 2 Foskett Ranch Open Space Preserve
- 3 Joiner Park Preserve
- 4 Lincoln Crossing Open Space Preserve
- 5 Lincoln Palisades Preserve
- 6 Markham Ravine Open Space Preserve
- 7 McBean Park Open Space Preserve
- 8 Rodeo Grounds Open Space Preserve
- 9 Sorrento 150 Open Space Preserve (Future)
- 10 Sterling Pointe Open Space Preserve
- 11 Sun City Lincoln Hills Open Space (Not City Owned)
- 12 Three-D South Open Space Preserve
- 13 Tweleve Bridges Open Space Preserve

Information

Open space preserves are located throughout the City of Lincoln and provide homes for many plants and animals. Preserves are unique in that they have native plant communities that have taken a long time to adapt and become established. These plant communities help grow and maintain the animal populations which include mallards, red-winged hawks, frogs, jackrabbits, and beavers.

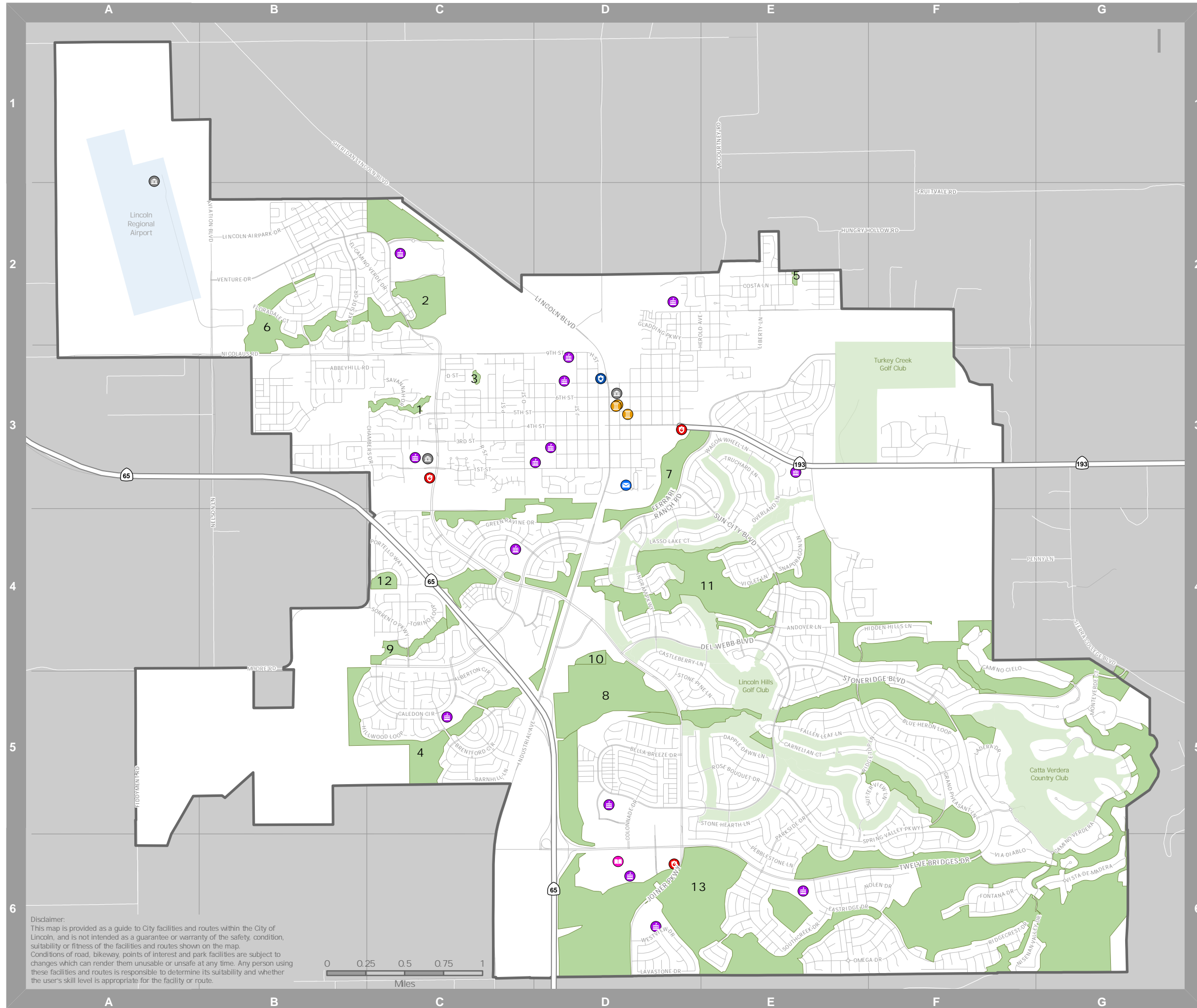
Etiquette

- All dogs must be on a leash while in public spaces, including open space preserve areas.
- While in preserve areas, pedestrians, pets, and bicyclist should stay on designated trails.
- Do not pick flowers or other vegetation from open space preserves.

For more information visit <https://lincolncalifornia.org/en/parks-recreation-and-activities/trails-and-open-spaces.aspx>

Legend

- | | |
|--|---|
|  Art and Culture |  Golf Course |
|  School |  Open Space Preserve |
|  Post Office | |
|  Fire Station | |
|  Police Station | |
|  Library | |
|  Other City Facility | |



Disclaimer:
 This map is provided as a guide to City facilities and routes within the City of Lincoln, and is not intended as a guarantee or warranty of the safety, condition, suitability or fitness of the facilities and routes shown on the map. Conditions of road, bikeway, points of interest and park facilities are subject to changes which can render them unusable or unsafe at any time. Any person using these facilities and routes is responsible to determine its suitability and whether the user's skill level is appropriate for the facility or route.

